

**Laser technology**

**Metrology**

**Robotics**

**Networking**

**SURFACE is what we know**

**We operate with experience and the highest standards, to achieve better results.**

At **Techno SURFACE** we offer our wide experience and knowledge of surfaces, to support your most advanced projects, to reach a common target.

**Innovation with good sense**



**Techno  
SURFACE**



**SURFACE** is our experience

**Surface treatment by laser is a world to explore to add value to your products.**

Techno SURFACE explores the opportunities offered by laser technology. The laser technology of design and engraving of glass and plastic molds, for example, is an important reality. Even the 3D laser engraving of various kinds of metal objects allows for new horizons, as the chisel, or engraving to impart unidirectional grip, or just to obtain a dull surface, and many other applications.

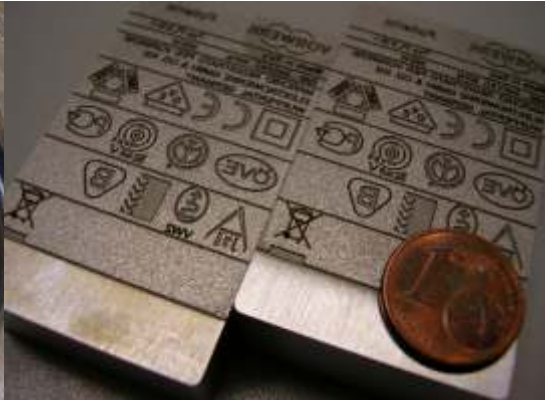
**Expert** in surface finishing

**LASER ENGRAVING**





## Laser technology

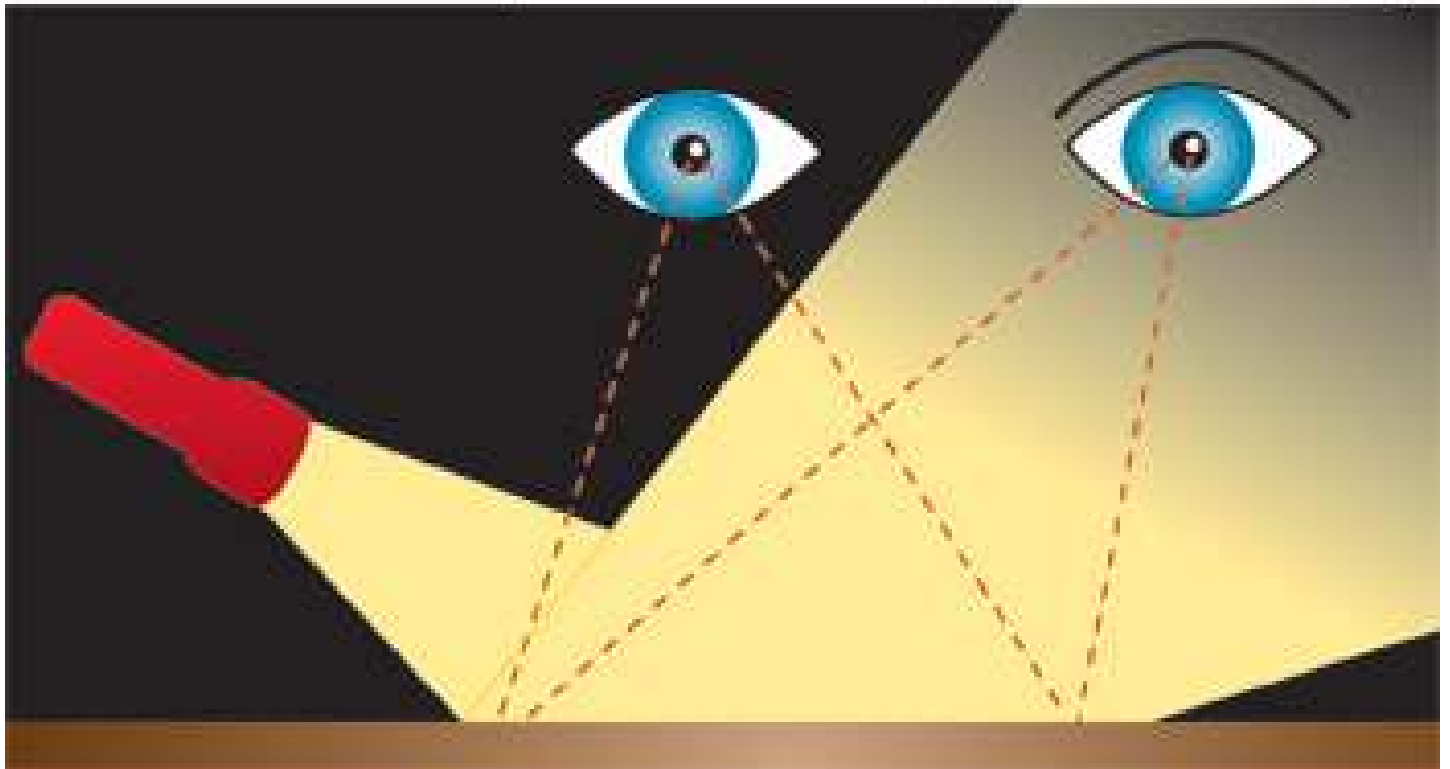
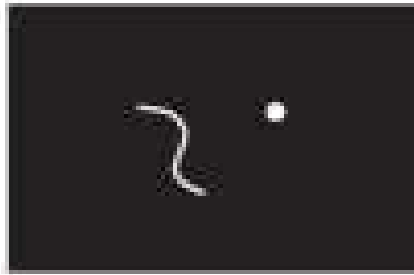


Never like now, in the digital age, it is possible to simplify heavy and expensive operations, as the texturing of surfaces or engraving and marking.

Thanks to an efficient network of subcontract services of 3D laser engraving, you can avail services of Just In Time innovative and incomparable quality, competitiveness and speed of execution.

**Techno SURFACE**, can positively contribute to the development of your projects by identifying the ideal partners for the type of technology required.

Innovation with good sense

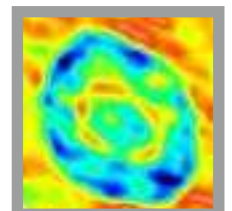


## METROLOGY to analyze your results

**To know, is the first step before to improve.  
Metrology is the way to analyze results and  
support quality improvements.**

Techno SURFACE is cooperating with several important brands of instruments, both for optical or contact profilometry, like interferometers, optical surface profilers, confocal, deflectometers, and classic contact mechanical rugosimeters. The choice of the right measurement system depends on the final application's requirement, like precision, speed, automation, detection range.

Competence in metrology





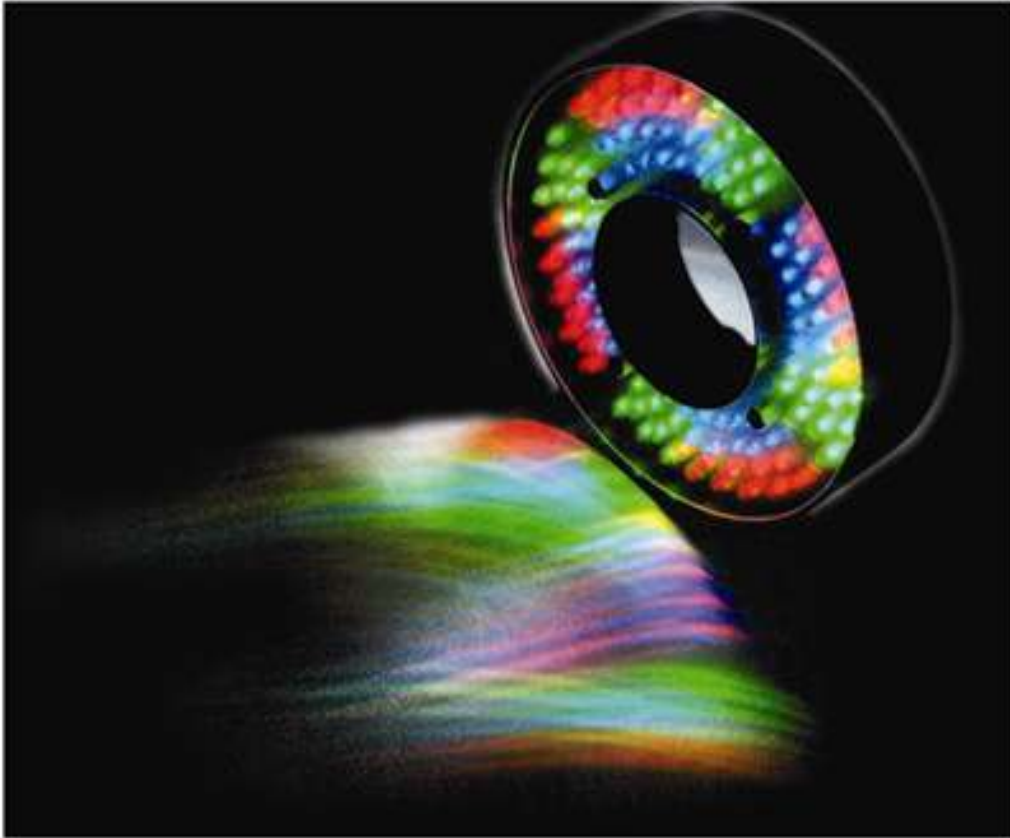
## Metrology

Surface **metrology** is a very important resource in the modern production lines and quality labs. The aim of **Techno SURFACE** is to support you in the choice of the correct system, according to the type of surface elements to be detected, the time, the quantity. Specific software are designed to identify references of the required quality, to compare automatically with each following detection and produce, as a result, the green light or the red light, inclusive of a detailed digital report.

Interesting evolutions are made on the 3D scanning and in the possibility to use metrology as basic element to inspect progress made with important projects.

As far as automation levels concerns, there are many possible solutions and, between them, it is also convenient, for some important volumes of detection to do per day, to integrate robotic cells, as informed in the next pages.

**Innovation** with good sense



## **JOINT technologies, shared for you**

**When quantities require efficient controls at appropriate times.**

At **Techno SURFACE** we operate in a network with specialists in vision systems, automatic systems for quality control and specialists in sensors of all types, from the recognition of color to the brightness, etc.

**Joint technologies in one touch**



## Metrology

Modern technologies, such as the LASER primarily, allow the delivery of 3D profiles in very short times. The various interactions between the integration of robots and sensors or cameras of adequate capacity, allow to repeat continuous comparisons between any specimen of reference and the scanned object, producing interesting discrimination in case of a negative result.

The continuous evolution of technology on the one hand allows for new results while on the other, requires continuous updates and expertise to coordinate better the expectations with the techniques available and the right partners.

**Innovation** with good sense



## **ROBOTIC to speed up productivity**

**We operate with almost all main brands of robot manufacturer, to assure best integration with your existing standards.**

At Techno SURFACE we offer top flexibility in the choice of the robot, offering the possibility to space between the major brands like ABB, Comau, Denso, Fanuc, Hunday, Kawasaki, Kuka, Mitsubishi, Stäubli, Yaskawa Motoman. Our challenge is to provide the necessary support to allow the most suitable integration into the metrology or production line.

Genuine passion for **robotics**





**Techno  
SURFACE**

## Robotics



The integration of a robotic cell into a production, a finishing or a metrologic line, is never a trivial task. The correct implementation of vision systems, of logistic devices (i.e.: rotary table, pallets dispensers, drawers or similar devices) is always a technical choice based on experience and competence.

The combination with the suitable kind of pliers, of automatic pliers changers, whenever required, or of parts filters, needs an expert software to be released and supported by the most efficient hardware (PC or PLC).

Techno SURFACE is supporting you to assure the best compliance of the supply to the required tasks, providing the necessary technical project both on software (work flow) and on hardware (system set-up and configuration).

**Innovation with good sense**



## **NETWORKING to share resources**

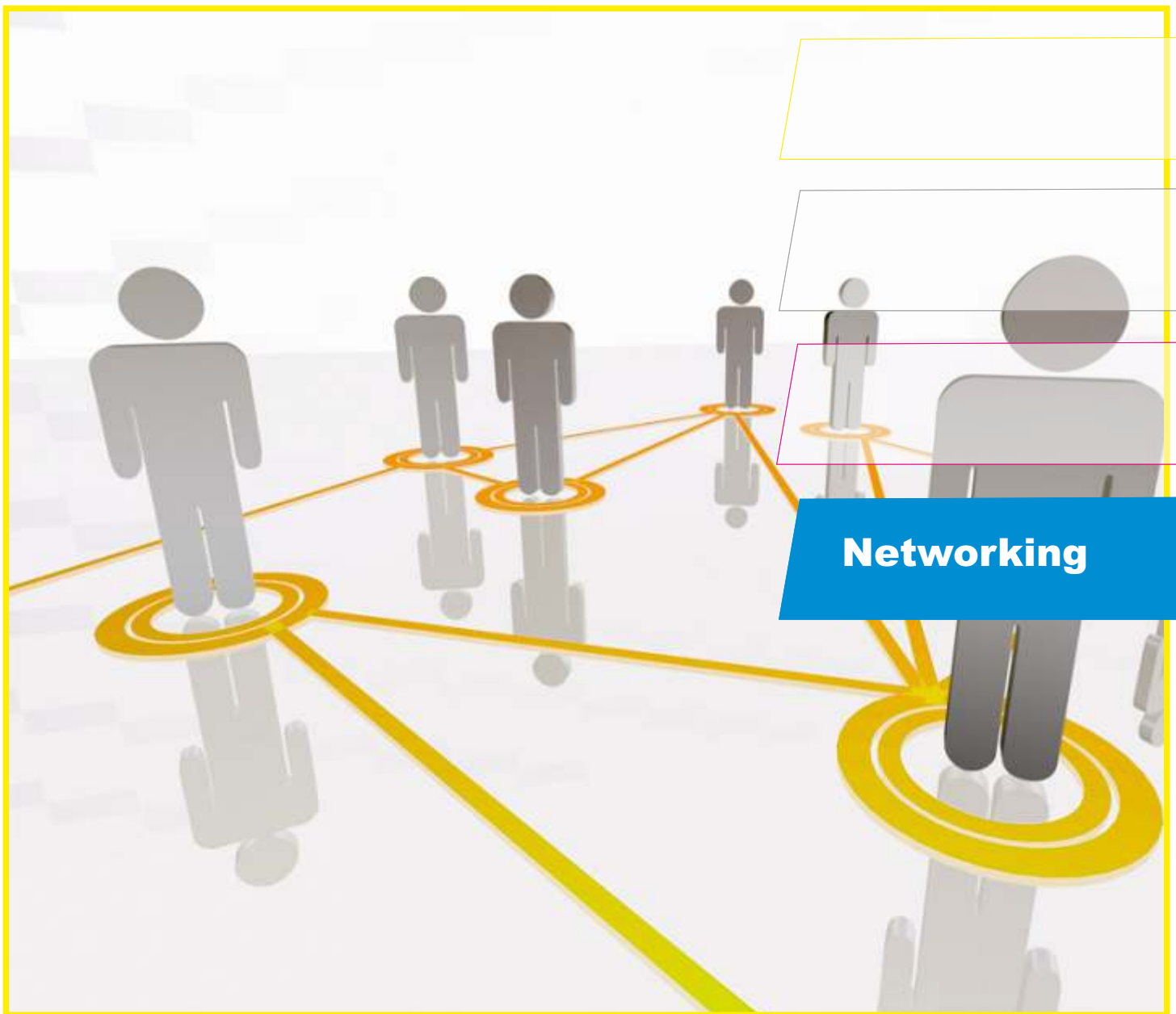
### **We operate to integrate and share resources.**

At **Techno SURFACE** we work to integrate and share resources, to offer advantages to several networkers.

One interesting resource can be the service of **METROLOGY ON DEMAND**, where a central lab could assist more users.

**Open to join people**





Networking is the future of smart activities, like subcontract of finishing activities, where several needs are common to everybody.

One example is the metrologic activity, particularly when this need is limited to a short period, for the validation of a new kind of process.

Another example is the technical support or advice, aimed at identifying the correct types of services or supplies that are needed to meet your projects on surfaces and their characteristics, by polymerization, application of antibacterial coatings, decorative sublimation coatings, to weathering processes of the state surface by laser or other known techniques.

**Innovation** with good sense



**Techno SURFACE**

**Metrology**

**Robotics**

**Networking**

**Contacts**

## Contacts

**Get in touch, to know more about our potentials.**

Techno SURFACE Sas  
di Bulli Elisabetta & C.

Viale Bianca Maria, 24  
20129 Milano (Mi)-Italy

tel. +39 392 46 16 856

[www.technosurface.it](http://www.technosurface.it)



**Techno  
SURFACE**